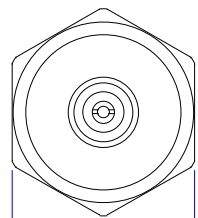
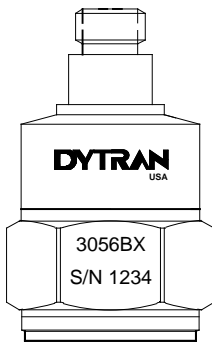
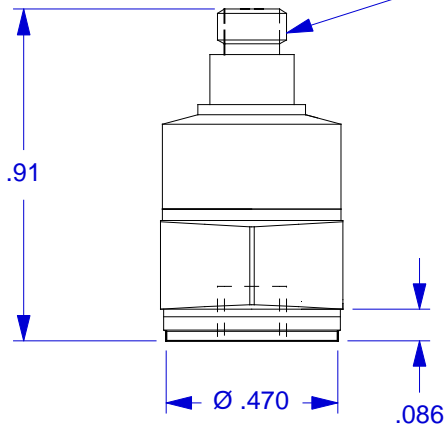


MODEL	SENSITIVITY	F.S. RANGE, ±5V
3056B1	10.0 mV/G	±500 G's
3056B2	100 mV/G	±50 G's
3056B3	500 mV/G	±10 G's
3056B4	20 mV/G	±250 G's
3056B5	50 mV/G	±100 G's

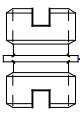


.500 HEX

10-32 COAXIAL CONNECTOR

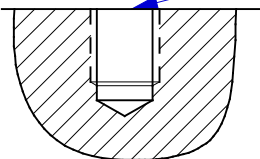


MODEL 6200 MOUNTING STUD, PROVIDED



10-32 THD., TYP

MOUNTING HOLE PREPARATION:
 SELECT SURFACE FLAT TO .001 TIR
 DRILL #21 (.159) DIA. X .250 DEEP
 BOTTOM TAP 10-32 UNF-2B X .200
 MIN. DEPTH PERF. THD.



1. CASE AND CONNECTOR MATERIAL: TITANIUM.

		CHATSWORTH, CA.	
SCALE	2X	REV	DATE
DATE	7/24/02	PART NO.	SERIES 3056B
DRAWN	N.C.	CHECKED	R.A.
APPROVED		NEXT ASSEMBLY	USED ON
TITLE OUTLINE/INSTALLATION DRAWING, MODEL SERIES 3056B		DWG NO. 127-3056B	
		SHEET 1 OF 1	

**SPECIFICATIONS
MODEL SERIES 3056B LIVM ACCELEROMETERS**

SPECIFICATION	VALUE	UNITS
PHYSICAL		
WEIGHT	10	Grams
SIZE, HEX x HEIGHT	.50 x 0.91	Inches
MOUNTING PROVISION	10-32 X .150 DEEP TAPPED HOLE	
CONNECTOR, RADially MOUNTED	10-32	Coaxial
MATERIAL, BASE, CAP & CONNECTOR	TITANIUM	
SEISMIC ELEMENT TYPE	CERAMIC, PLANAR SHEAR	

PERFORMANCE

	MODELS					
	3056B1	3056B2	3056B3	3056B4	3056B5	
SENSITIVITY, $\pm 5\%$ [1]	10	100	500	20	50	mV/g
RANGE F.S. FOR ± 5 VOLTS OUT	± 500	± 50	± 10	± 250	± 100	g's
FREQUENCY RANGE, $\pm 5\%$			1 to 10,000			Hz
RESONANT FREQUENCY, NOM.			32			kHz
EQUIVALENT ELECTRICAL NOISE	.007	.0007	.00014	.0035	.0014	g's RMS
LINEARITY [2]			± 2			% F.S.
TRANSVERSE SENSITIVITY, MAX.			5			%

ENVIRONMENTAL

	3056B1	3056B2	3056B3	3056B4	3056B5	
MAXIMUM VIBRATION/SHOCK	600/3000	400/2000	200/1000	600/3000	500/3000	\pm G/GPk
TEMPERATURE RANGE			-60 to +250			°F
SEAL, HERMETIC			Glass-to-metal/welded			
COEFFICIENT OF THERMAL SENS			.06			%/°F

ELECTRICAL

SUPPLY CURRENT/COMPLIANCE VOLTAGE RANGE [3]	2 to 20/+18 to +30		mA/Volts
OUTPUT IMPEDANCE, TYP.	100		Ohms
BIAS VOLTAGE, +10.5 VOLTS NOM.	+9 to +12		VDC
DISCHARGE TIME CONSTANT, NOM.	0.5		Sec
OUTPUT SIGNAL POLARITY FOR ACCELERATION TOWARD TOP			Positive
ELECTRICAL ISOLATION, CASE GROUND TO MOUNTING SURFACE min.			10 Megohms,

Accessories supplied: (1) Model 6200 mounting stud.

[1] Measured at 100 Hz, 1 G RMS per ISA RP 37.2.

[2] Measured using zero-based best straight line method, % of F.S. or any lesser range.

[3] Do not apply power to this device without current limiting, 20 mA MAX. To do so will destroy the integral IC amplifier.

OPERATING INSTRUCTIONS MODEL SERIES 3056B